



MEDI-TECH  
SOLUTIONS



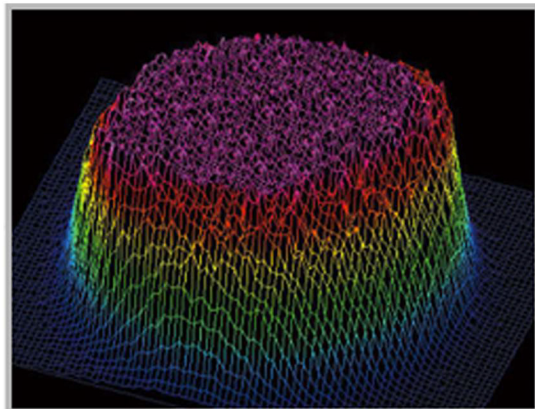
FAST SERVICE AND BEST VALUE



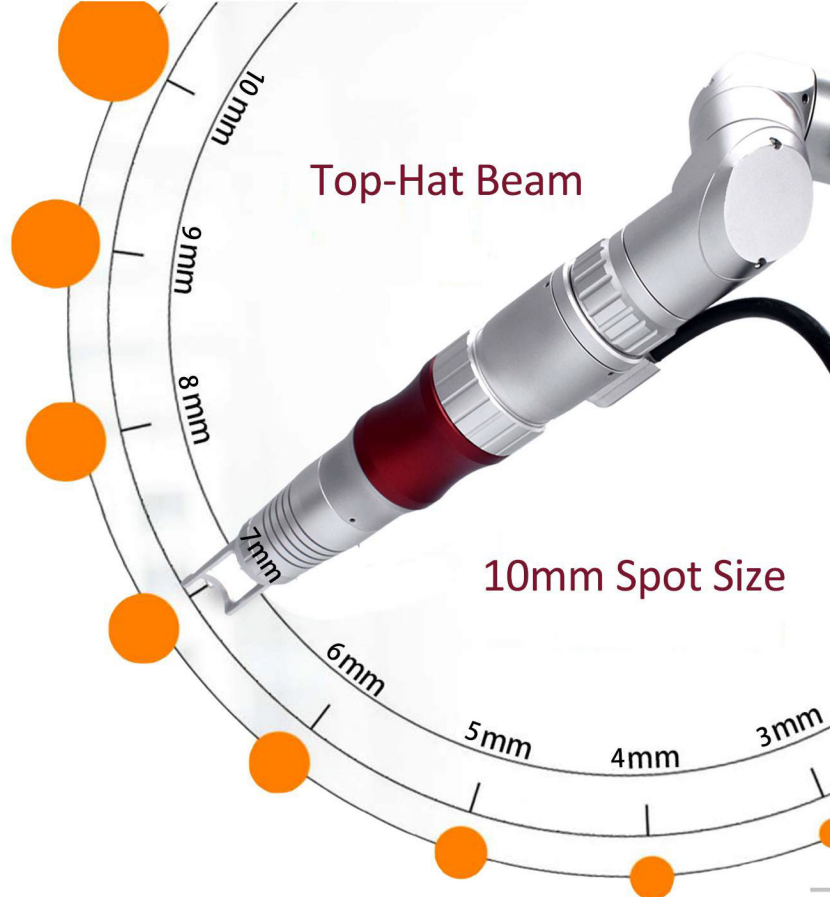
Tattoo Removal Skin Care System



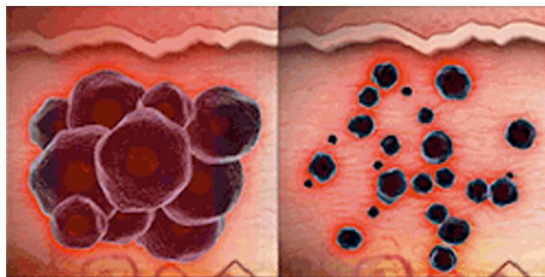
## ■ Principle



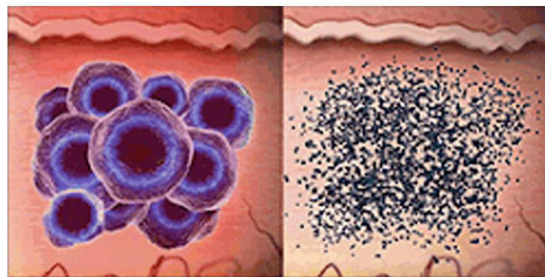
Perfect Top-Hat Mode



PICOLASER is the Nd:YAG picosecond laser system to treat tattoo colors & pigmented lesions. In terms of speed & comfort, its performance is Superior to any other device in the market.



TRADITIONAL LASER



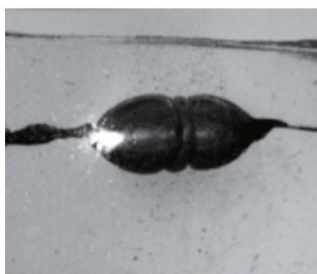
PICOLASER

## ■ NANO VS PICO

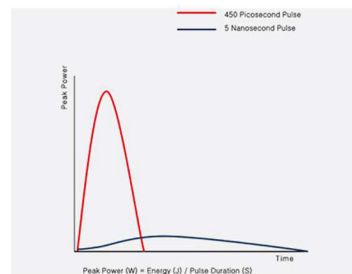
Comparison between nanosecond and picosecond on tissue phantom



5 nanoseconds



450 Picoseconds



Nano second pulse / One Billionth of a second / 0.0000000006

Pico second pulse / One Trillionth of a second / 0.00000000007

## ■ Laser Skin Revitalization

- Acne scars
- Brown spots
- Fine lines
- Freckles
- Melasma
- Pigmented lesions
- Stretch marks
- Wrinkles

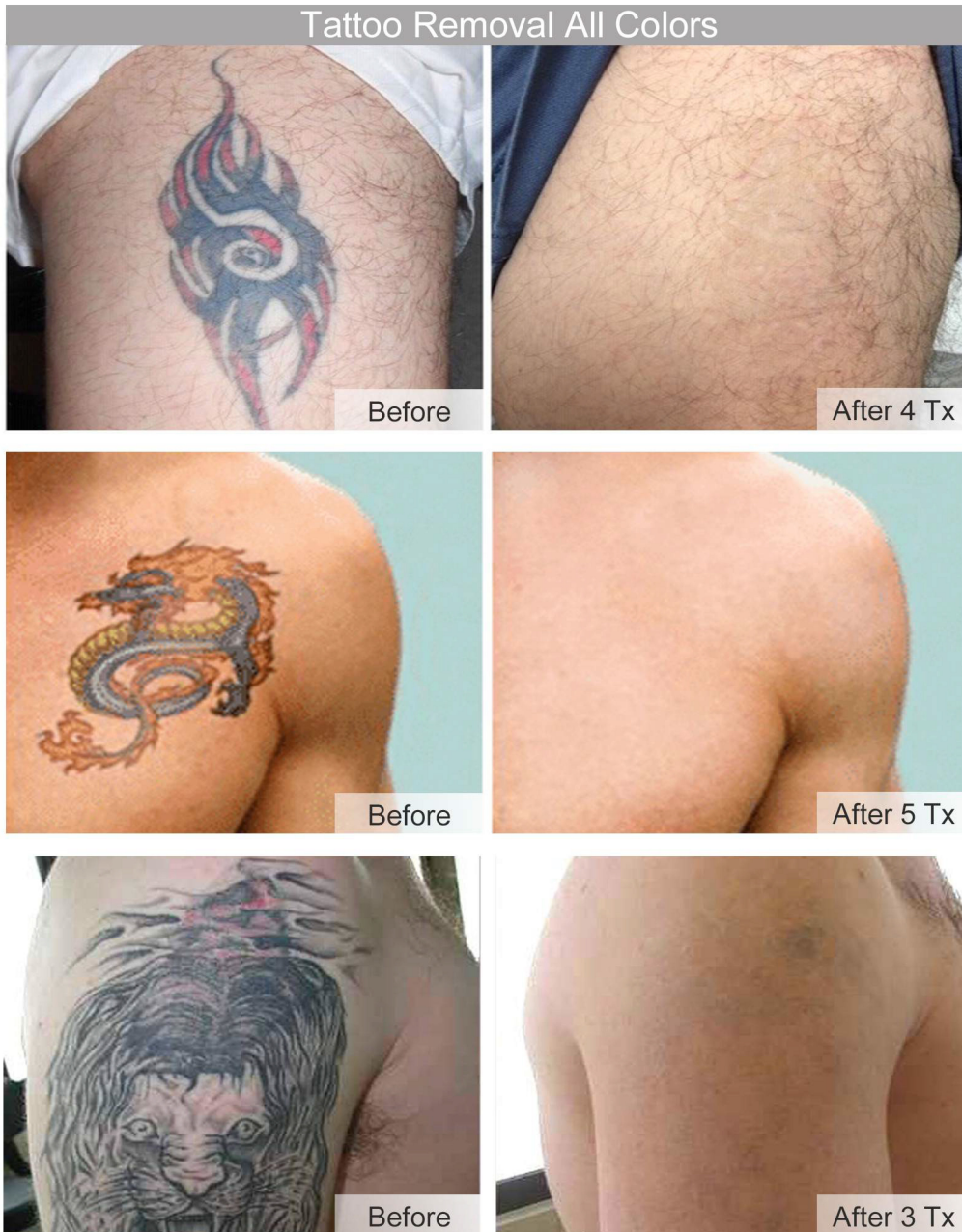


PicoPulse is a quick and easy non-surgical, non-invasive laser skin treatment that focuses on your problem areas whether it's brown spots, sun damage, freckles, pigmented lesions, wrinkles or acne scars, and can be used to treat many areas of the body including the chest or décolleté, face, hands, legs, and more.

Refresh your skin today with PicoPulse's breakthrough technology and see visibly clearer skin faster, and with fewer treatments.



## ■ Tattoo Removal All Colors



The PicoPulse laser has been considered the gold standard in tattoo removal. This cutting-edge laser creates an intense photothermal impact that not only spares the skin from high photothermal damage. PicoPulse tattoo removal also provides better color removal with fewer treatments. Efficiently targeting ink particles across all skin types, without harming surrounding tissue.

## ■ Technique Specification

Type of Laser	Electro Optical Picolaser
Picolaser	Active Picolaser
Wavelength	1064nm and 532nm
Single pulse energy	500mj @ 1064nm, 350mj @ 532nm
Pulse Width	3ns (Standard); 450ps (Optional)
Power	2000W
Spot Size	2~10mm (adjustable)
Pulse Frequency	1~10 Hz (adjustable)
Handpiece Optional	585nm/650nm/755nm/Focus (Optional)
Cooling System	Water Cooling and Heat Radiator
Screen	10.4" True Color Touch Screen
Voltage	100-240VAC, 20A max, 50/60Hz
Machine Dimension	830x310x840mm

---