

Emsculpt

Muscle Building and Fat Reduction



F A S T
S E R V I C E
A N D
B E S T
V A L U E



Air cooling system

Emsculpt

The only non-invasive procedure to build muscle and burn fat.

■ Technology

**30 minutes = 30000 muscle contractions
(equivalent to 30000 belly rolls / squats).**



1. Four treatment handles: dual channel control energy, support two or four handle synchronous work
2. Non-invasive procedure
3. Without downtime without anesthesia
4. To simultaneously build muscle and burn fat
5. 180 radian handle design, more suitable for arm and thigh curve design

Technique Creates Beauty

▪ Handpieces



Handpiece 1 (For Body)

Mainly for large area treatment like body, belly, buttocks, thigh.



Handpiece 2 (For Body)

Latest generation technology, high-tech nonwater cooling, high quality insulated material, one size suitable for multiple areas.



Handpiece 3 (For Arm&Leg)

Mainly for treatments on arms and legs



Handpiece 4 (For Arm&Leg)

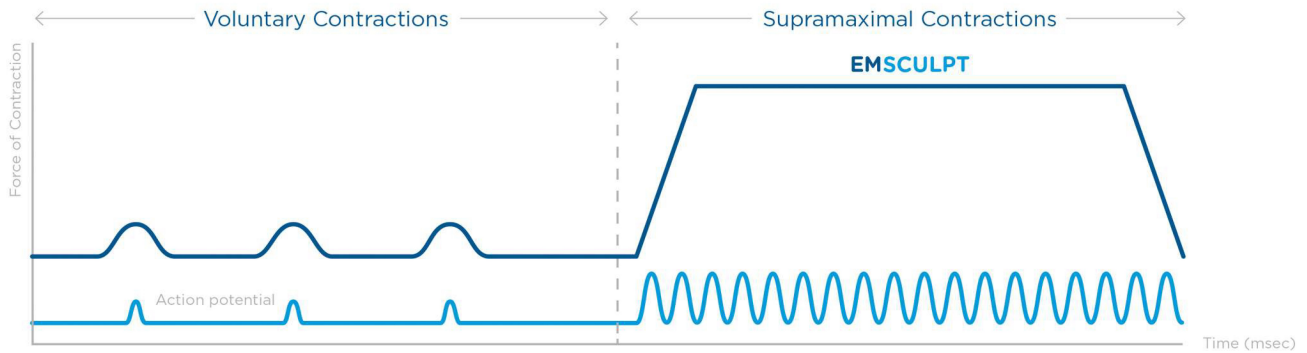
Unique small handle curved, ergonomic, perfect for arm, waist, hips, thigh and calf.

A
S
I
S
E
R
V
I
C
E
A
N
D
B
E
S
I
V
A
L
U
E

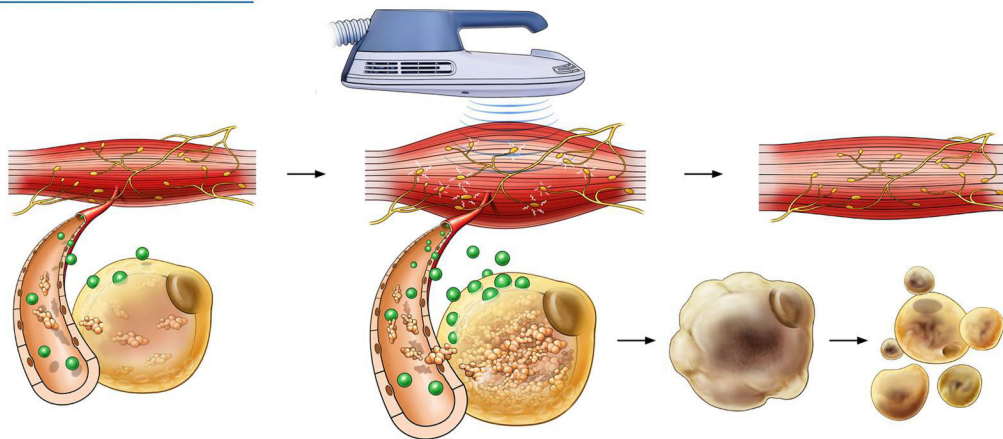
Principle

EMSCULPT uses High-Intensity Focused Electro-Magnetic (HIFEM®) technology.

- **EMSCULPT** with HIFEM induces approximately 20,000 forced muscle contractions per session^{1,3}
- These forced contractions, considered supramaximal contractions are not normally achievable through voluntary muscle action



BECAUSE IT IS NOT ONLY ABOUT FAT...



Proven Clinical Results

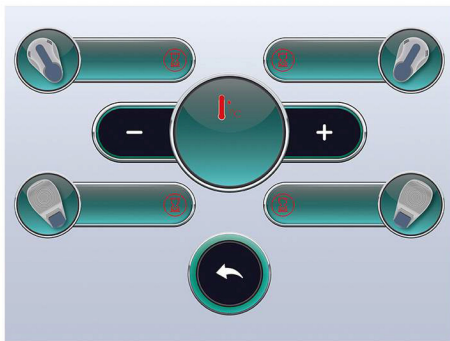


Technique Creates Beauty

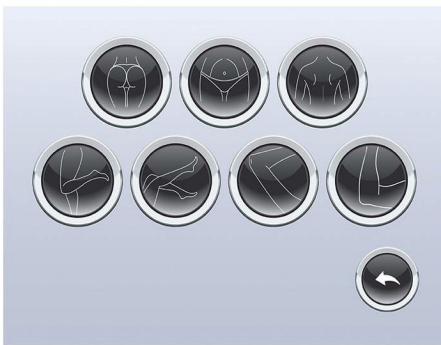
THE BEST VALUE

Software

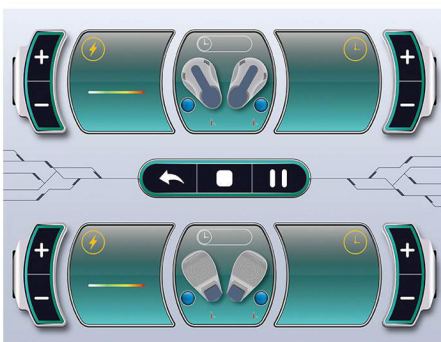
Easy Touch and Intelligent Diagnostic System



Automatic mode or manual mode can enter into operation.



Easy touch software provides recommended settings for interface of gender/age/position- makes operation no difficult any more.



Automatic working interface: Each mode contains 6 different frequency automatic switching.

F
A
S
T
S
E
R
V
I
C
E
A
N
D
B
E
S
T
V
A
L
U
E

■ Technique Specification

Product name	HIFEM Beauty muscle instrument
Model NO.	MED-beauty
Screen Size	12.1"
Handpiece	4; (2*handpiece1; 2*handpiece2)
Pulse Voltage	500V-1400V
Energy	7 Tesla
Working Mode	Automatic & Professional
Output power	5000W
Frequency	10-50HZ
Continuous Working	24 Hours Non-Stop
Voltage	220V±10% 50/60Hz, 110V±10% 50/60Hz
Machine size	530x480x1040mm
Weight	50kg